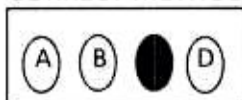


## INSTRUCTION TO CANDIDATES :

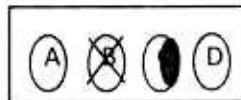
While coming to the examination hall for the Objective Internal Assessment Examination, please bring the following documents:-

- i) Admission receipt provided at the time of admission
- ii) Dibrugarh University Registration Card
- iii) Black Ball Pen
- iv) Candidates ID Card (provided by the Study Centre)
  - ◆ It may be noted that candidates will not be issued any Admit Card for this examination. However, entry to the examination hall will not be allowed without the Programme Admission Receipt and the Student Identity Card provided by the Study Centre.
  - ◆ Electronic Devices/ Cellular Phone/ Mobile/ Pager etc. shall not be allowed in the Examination Hall.
  - ◆ Candidates should return the Examination OMR Sheet at the conclusion of examination.
  - ◆ *Apart from the discussions regarding a particular topic of the Syllabus provided in the SLMs, questions may be asked on basic concepts, very closely interlinked with the Syllabi topics.*
  - ◆ Sample copies of the OMR sheets have been uploaded in the Website with an objective to familiarize the learners with the OMR sheet and its rules.
  - ◆ Candidates can keep the OMR Question Booklet with them after the completion of the examination.
  - ◆ The question will cover all the areas given in the Syllabus.
  - ◆ Questions will be within the given syllabus of each Course, but may not always be exclusively from the SLMs provided to the Learners.
  - ◆ A Question Booklet will contain 20 questions for each of a Programme.  
For eg., for M.A. in English Programme (Previous year) the Booklet will contain 100 questions (20 questions each from 101, 102, 103, 104, 105 & 106).
  - ◆ All questions of the Booklet are compulsory.
  - ◆ Each question will be followed by 4 answer options.  
Mark your answer like this –

CORRECT METHOD



WRONG METHOD



- ◆ Use of Correction Fluid is prohibited.
- ◆ Answers should be marked using Black Ball Point Pen only.
- ◆ The duration of the examination is 2½ hours.
- ◆ For the final year learners of Assamese, Economics, Commerce, Education and Mathematics group specification i.e., A or B or C as per their options in the OMR answer sheet is a must without which their answer sheet shall not be considered for evaluation.

Sd/-  
Director  
DODL, DU